



Installation Guide for Kaye Software on Win 8 and Win 10

Jan 2017

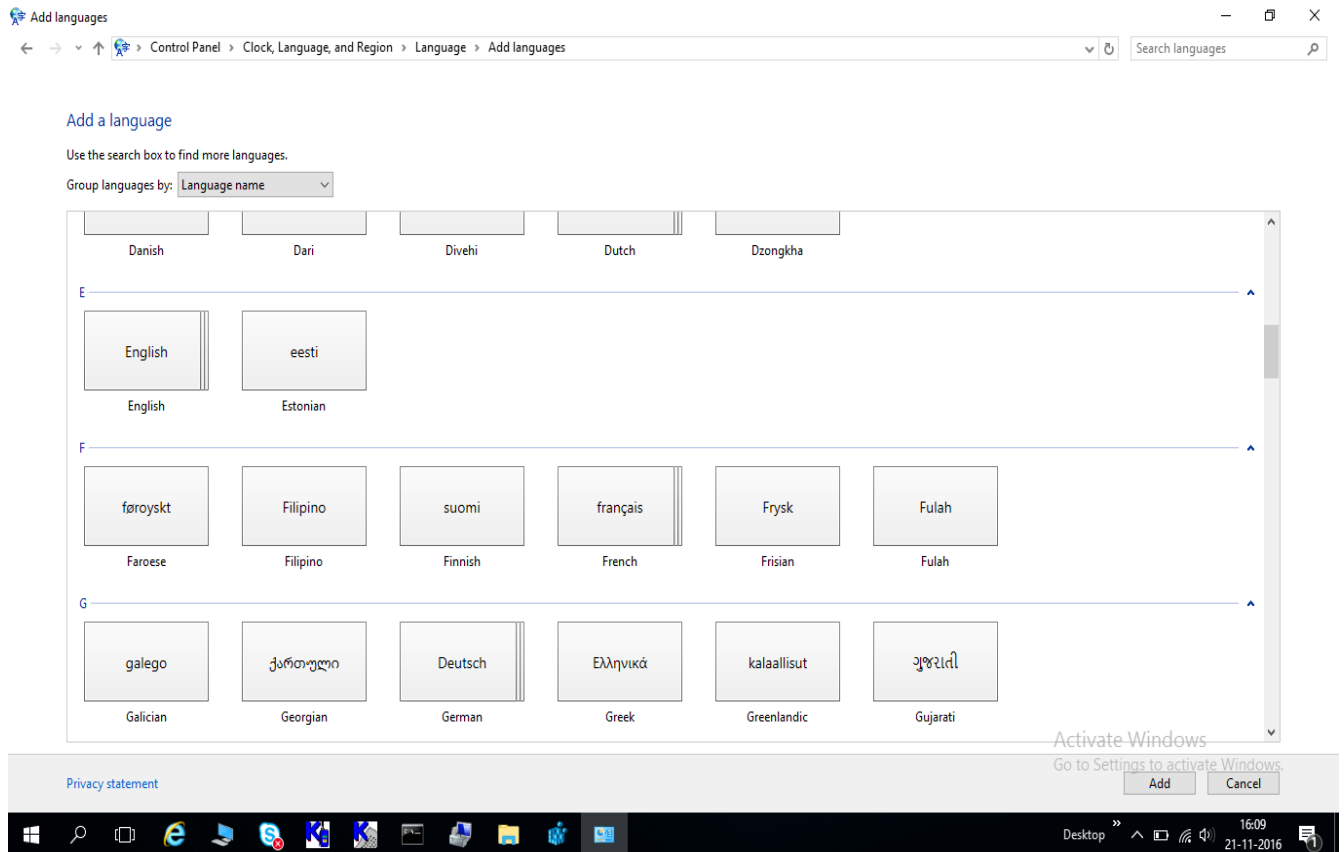
Table of Contents

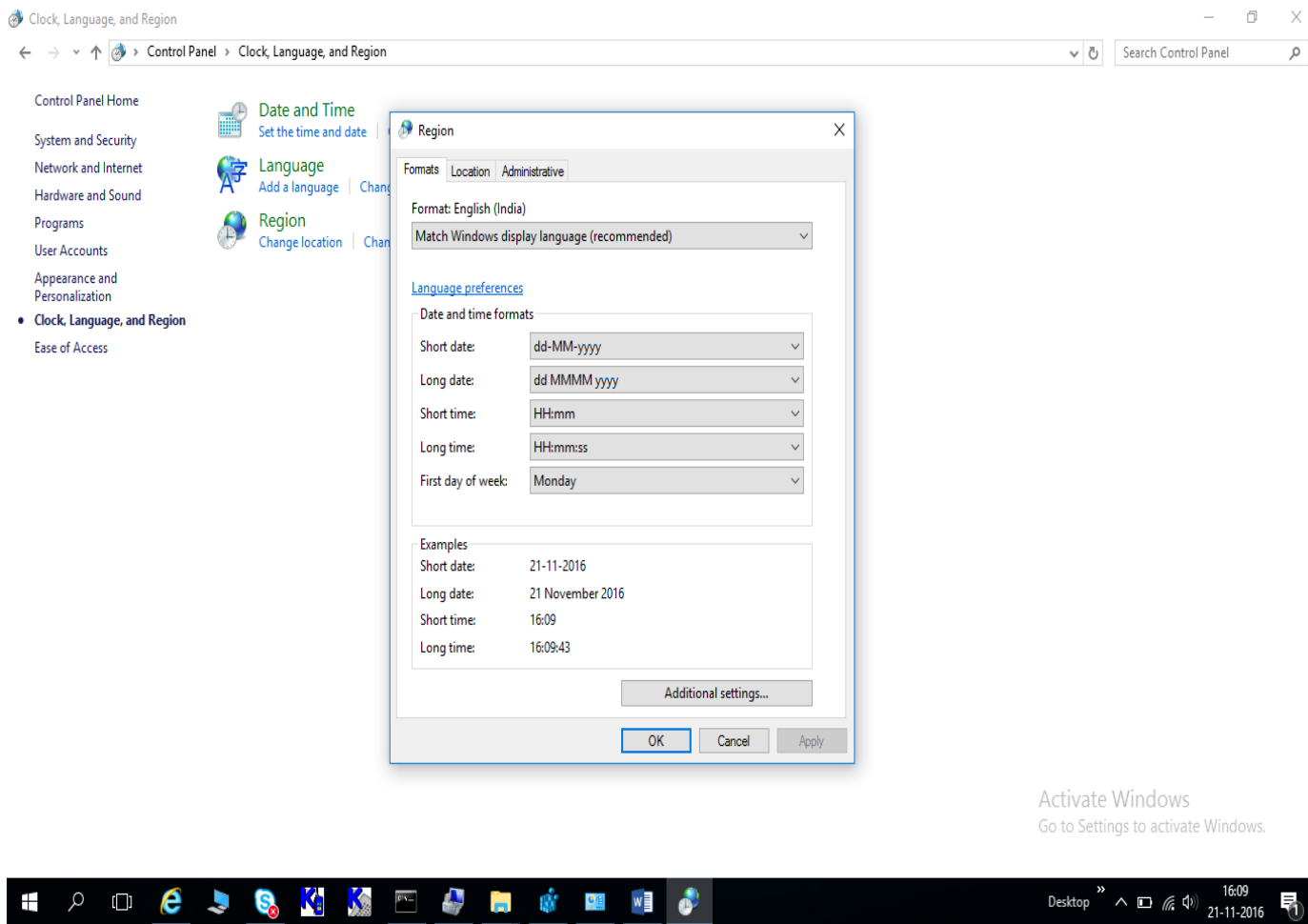
Installation Guide	Page 2
Office 2010 Configuration	Page 6
Office 2016 Configuration	Page 9
Windows 8/10 user Configuration	Page 12



Installation Guide for Kaye Software on Windows 8 and Windows 10

Kaye Software on Win 8 and Windows 10 has been checked with English, German and French OS with corresponding language and Regional settings (Control panel – clock, Language and Region – Region and Language)

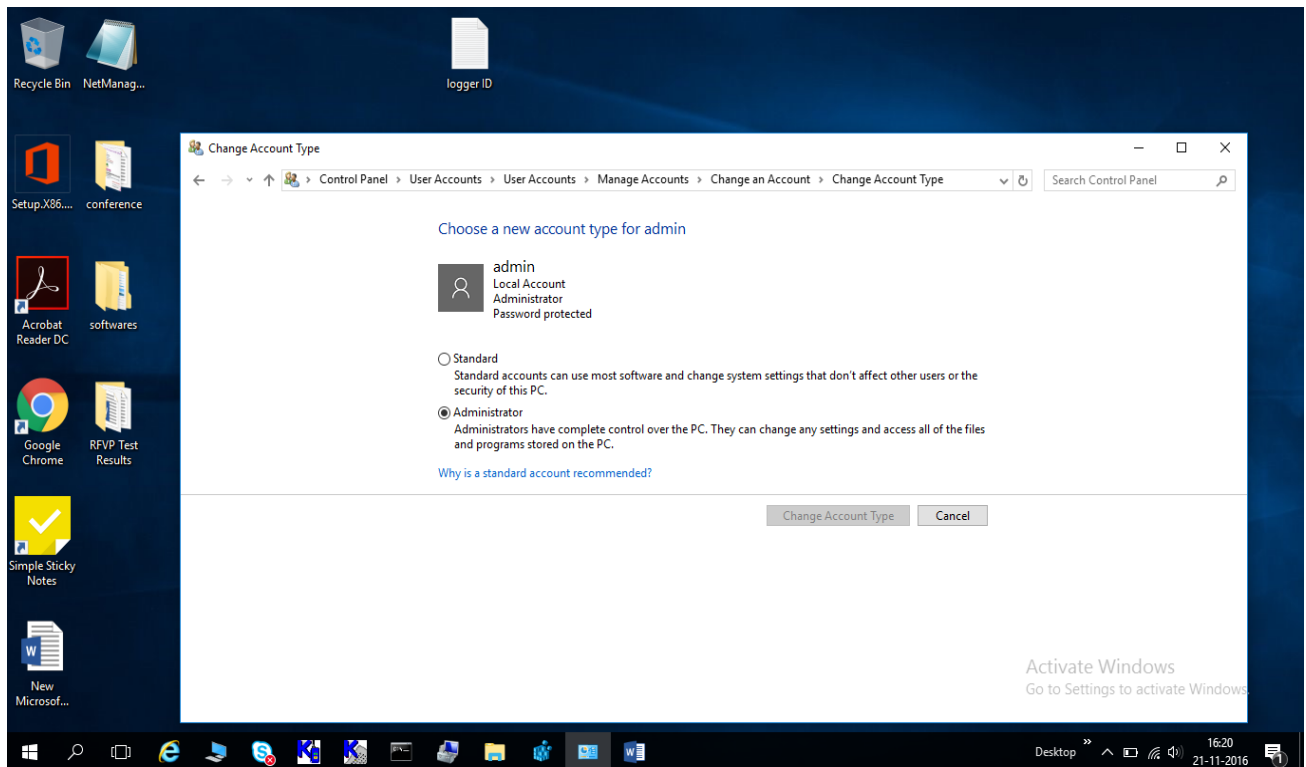




Before installing Kaye Software make sure full office package is locally installed and activated!

Login as PC Admin with full rights before installing Kaye Software

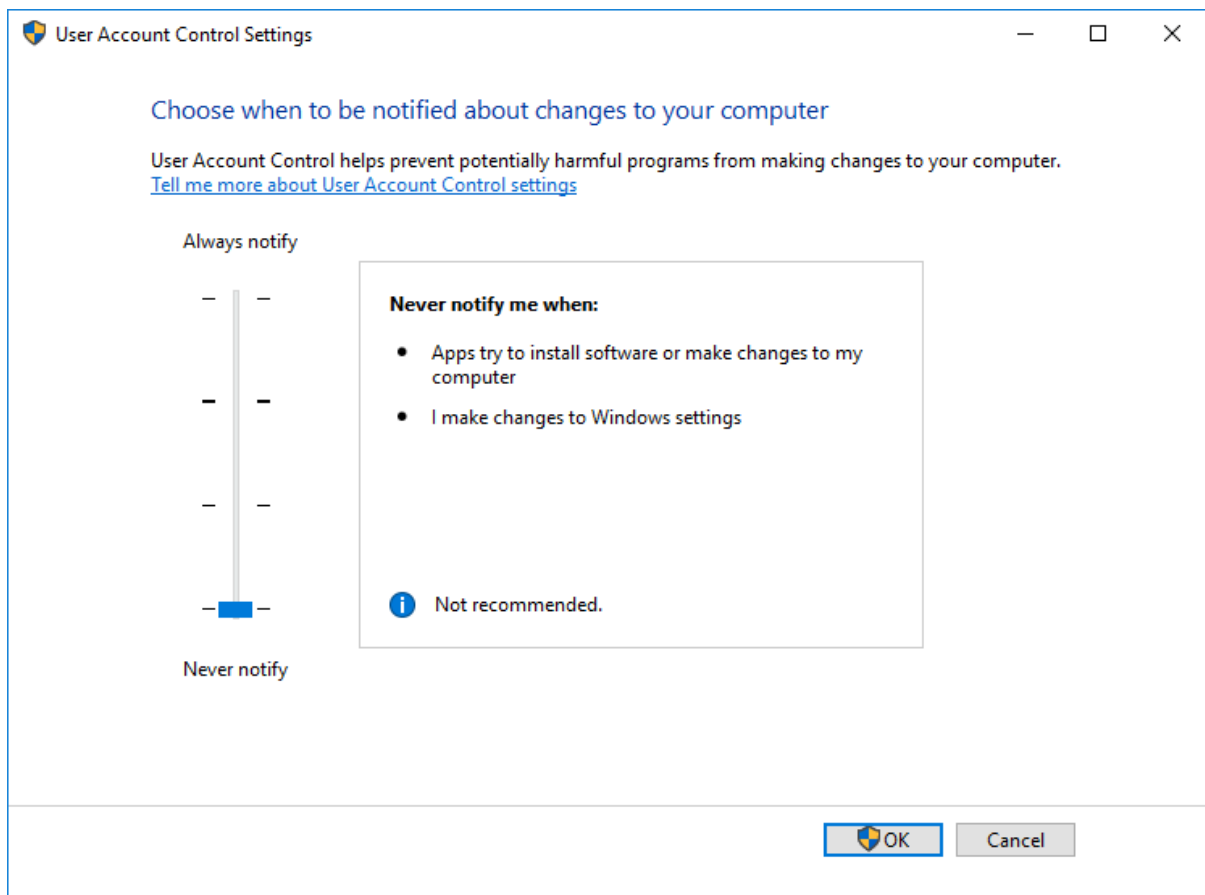
You can check under Control Panel – User Accounts – Change User Account Type (see example below)



Go to the Control Panel and type UAC in the search window on top right screen.

Then click on “Change the User Account Control settings”

Set the UAC settings to “Never notify me” (see screenshot below). Restart the PC.



Install the Kaye Software. If Necessary run the client Setup under Windows- Start – Kaye Validator(or RF ValProbe). Run Report Wizard installation.

If other Kaye Software is already installed, you may create a separate folder in the Kaye directory.

After Report Wizard installation check Office Settings below:

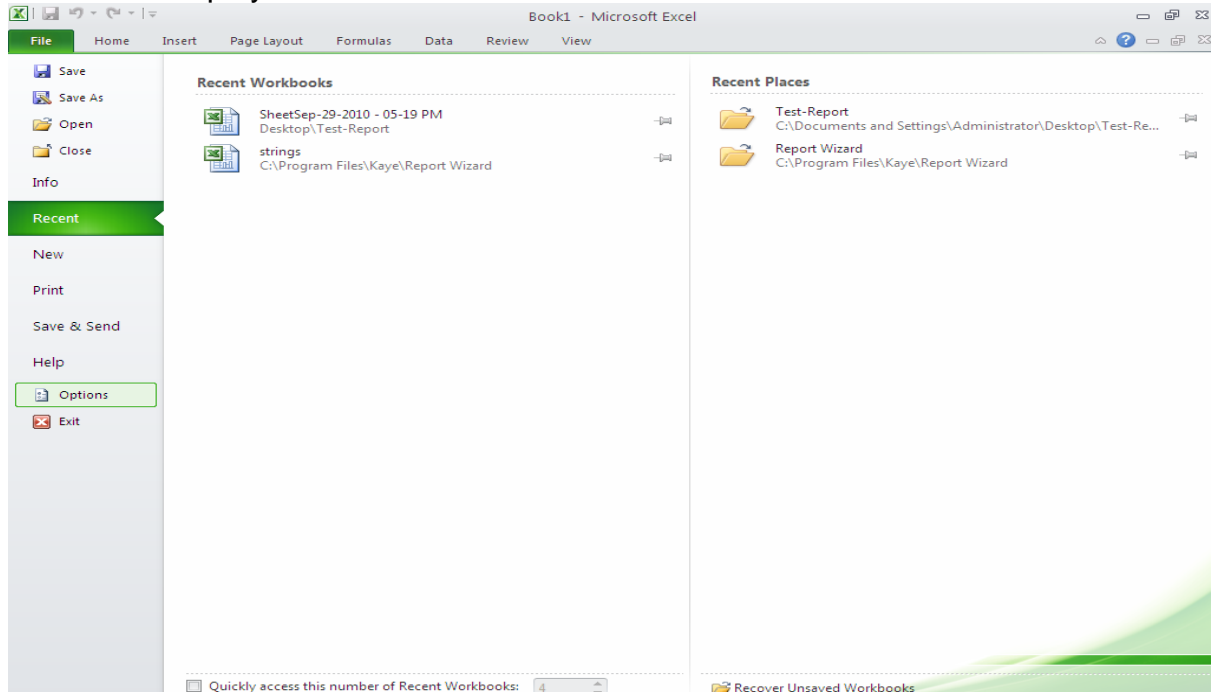
Depending on the Office version installed it may be necessary to perform some corrections or settings:

- For Office 2010 installation refer to section “Office 2010 Configuration” of this document.
- For Office 2016 installation refer to section “Office 2016 Configuration” of this document.

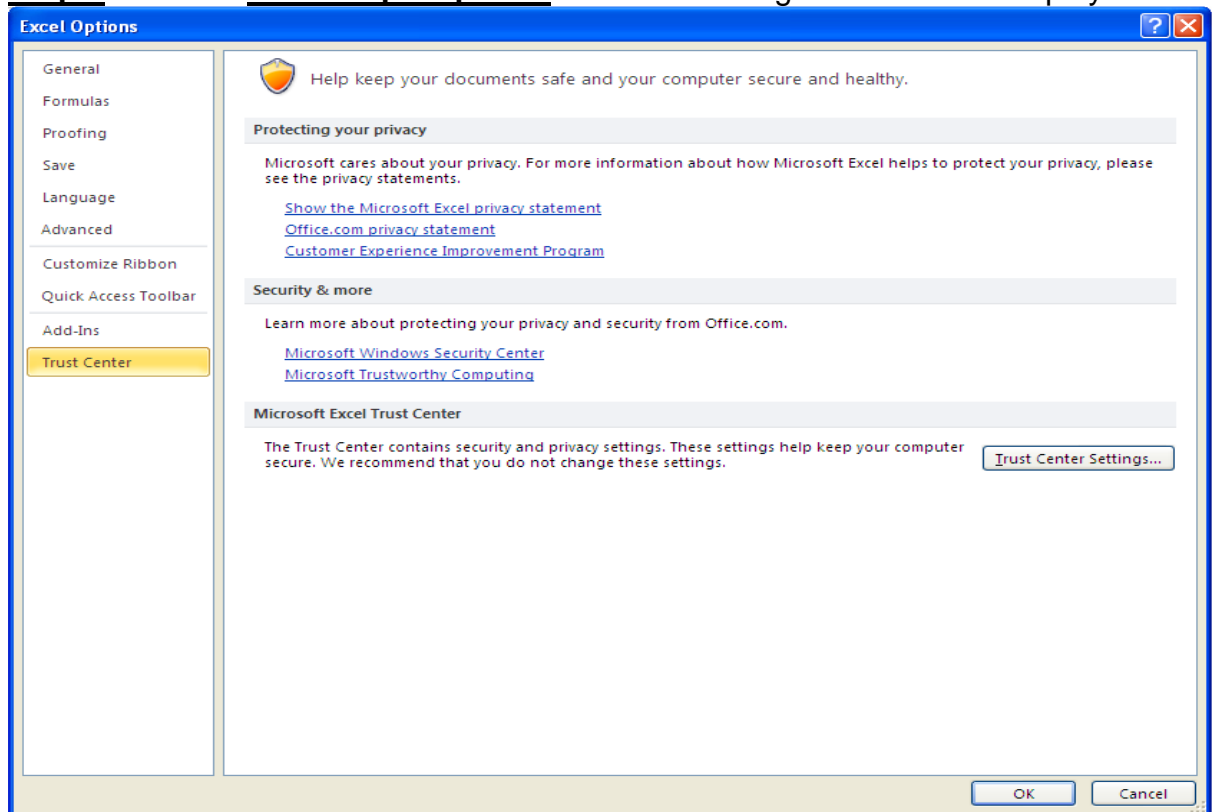
If you are not operating as a PC Admin you should set the permissions on the Kaye folder following the document “Windows 8 User Configuration”.

Office 2010 Configuration

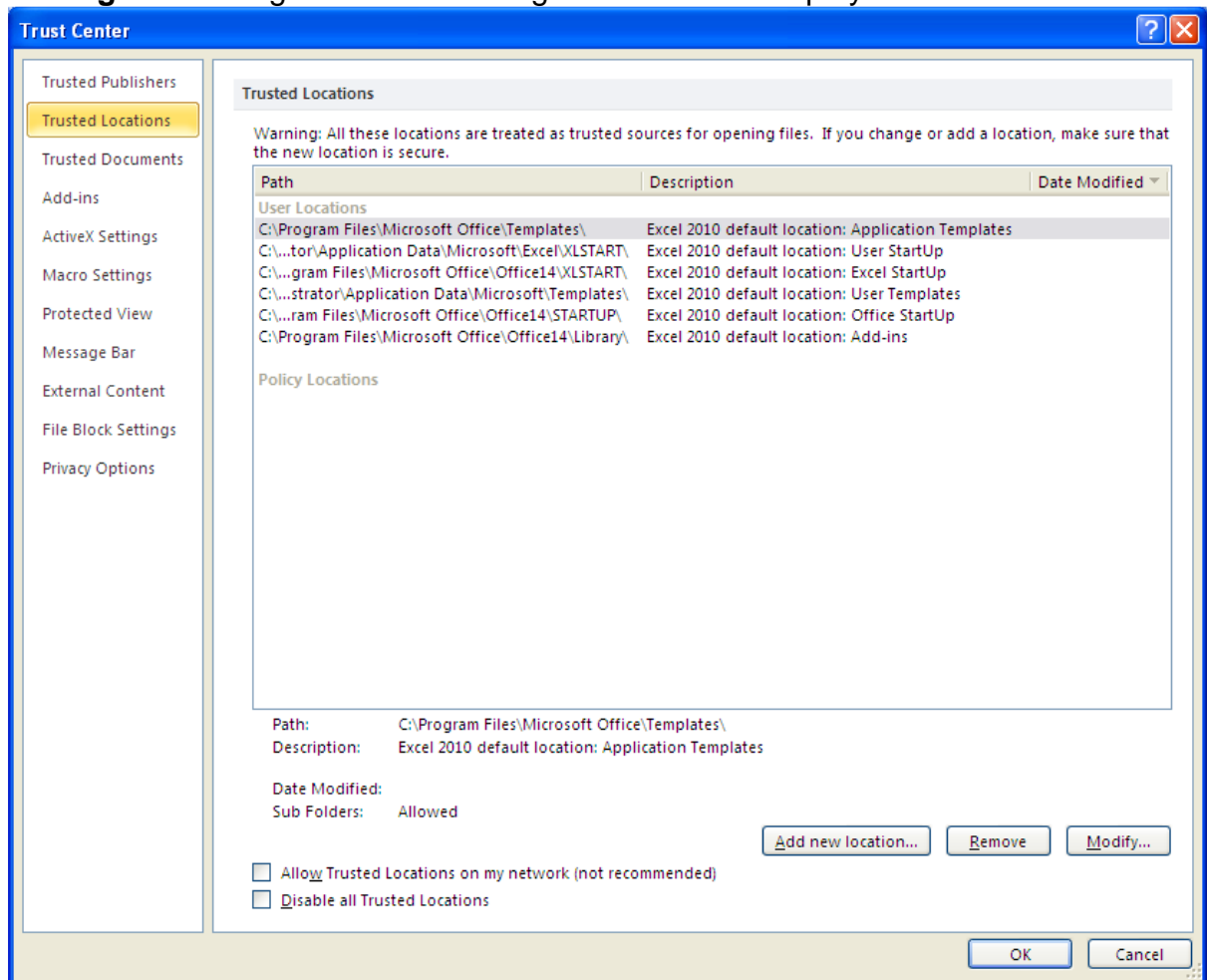
Step 1: Launch the Excel and click on the File menu of Top-Left. Following screen will display with menus.



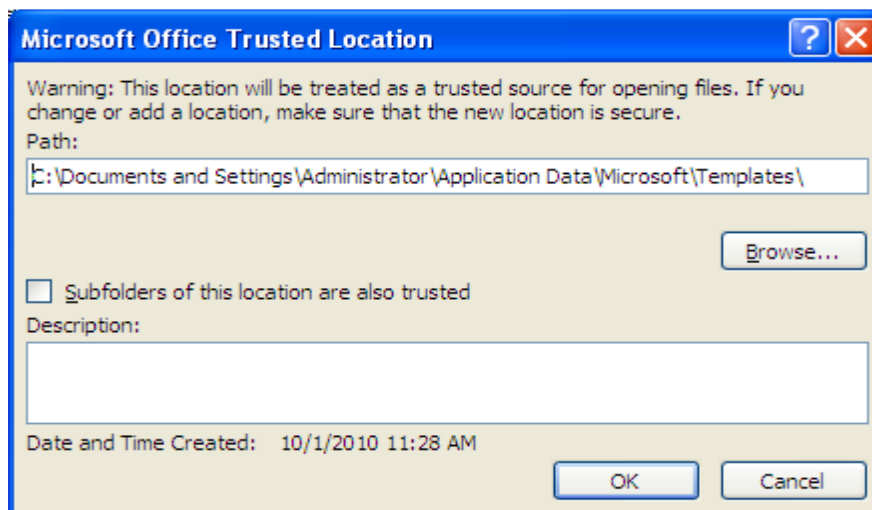
Step 2: Click on **File->Help->Options** menu. Following screen will be displayed.



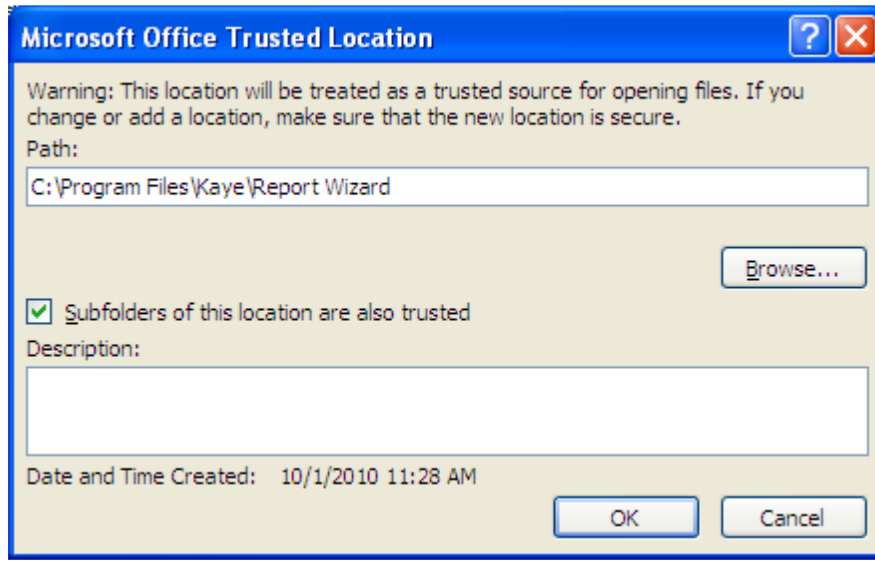
Step 3: Select the **Trust Center** in left pane and click on the **Trust Center Settings** in the Right Pane. Following Screen will be displayed.



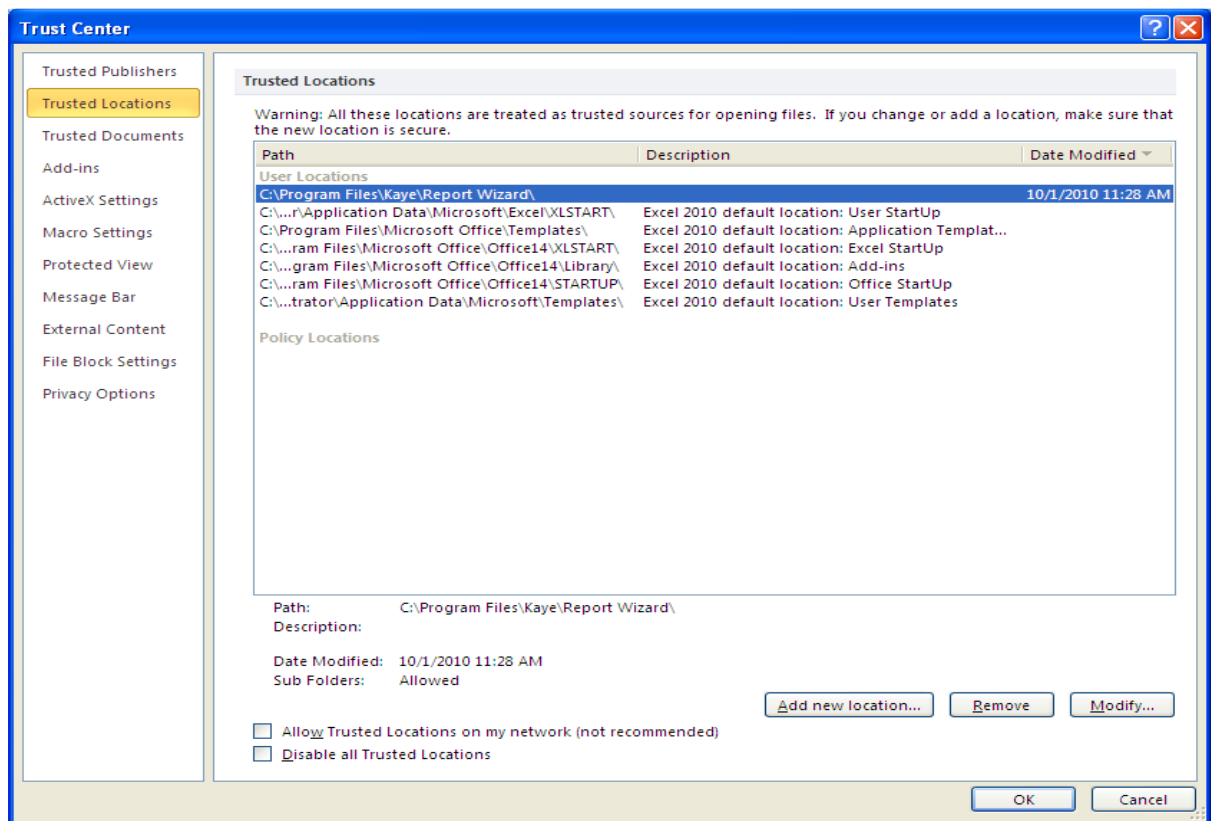
Step 4: Select the **Trusted Location** in left pane and click on the **Add new location** in the Right Pane of the above screen. Following screen will be displayed.



Step 5: Browse the folder where report Wizard is installed like in this case it is **C:\Program Files\Kaye\Report Wizard** and checked the **check box (sub folders of this location are also trusted)**.



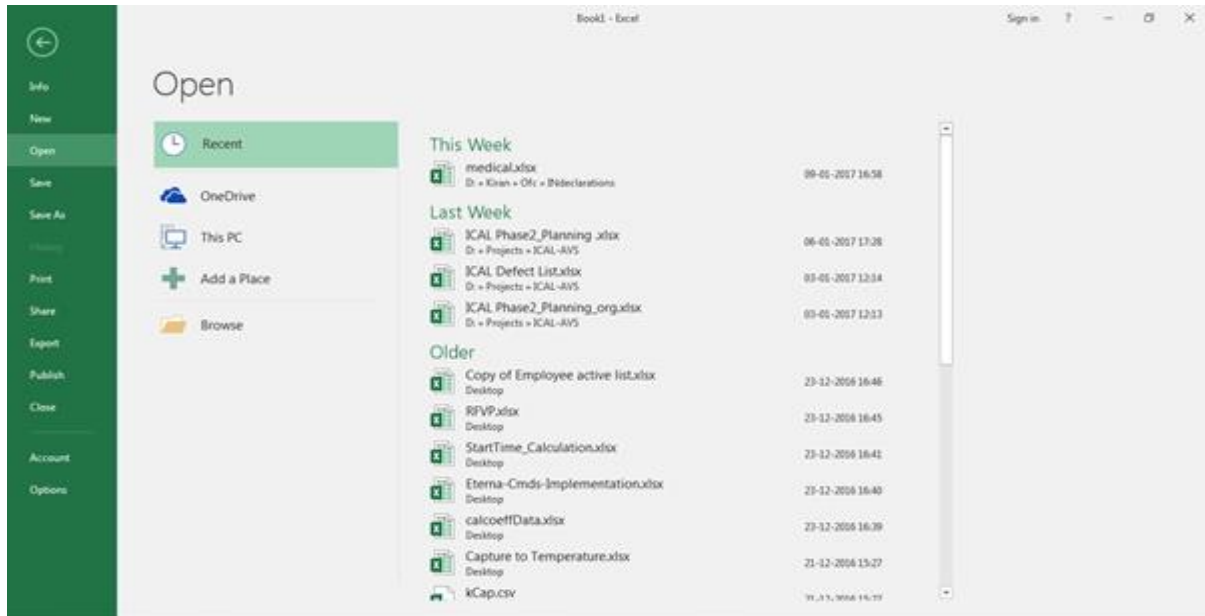
Step 6: Click on the OK button of above screen. Following screen will be displayed. Check that above path is added in the Right pane.



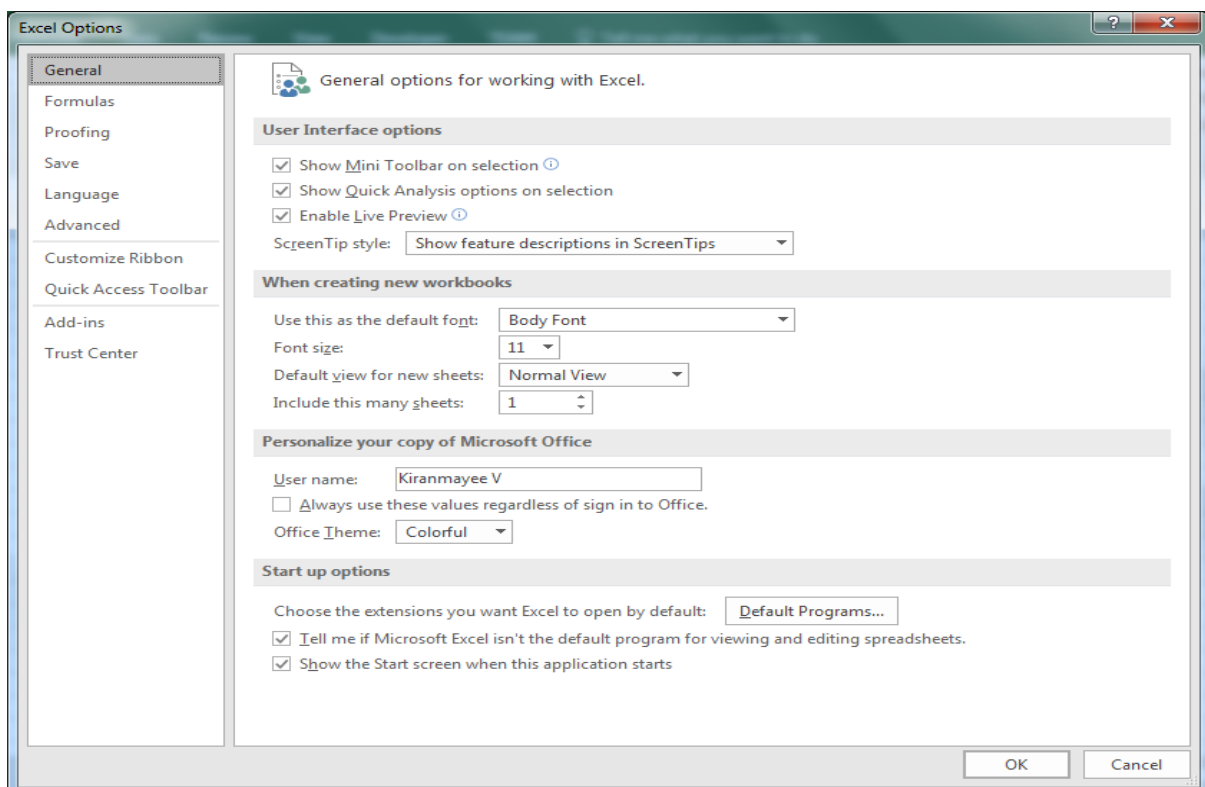
Step 7: Click on the OK button of the above screen and exit the Excel.

Office 2016 Configuration

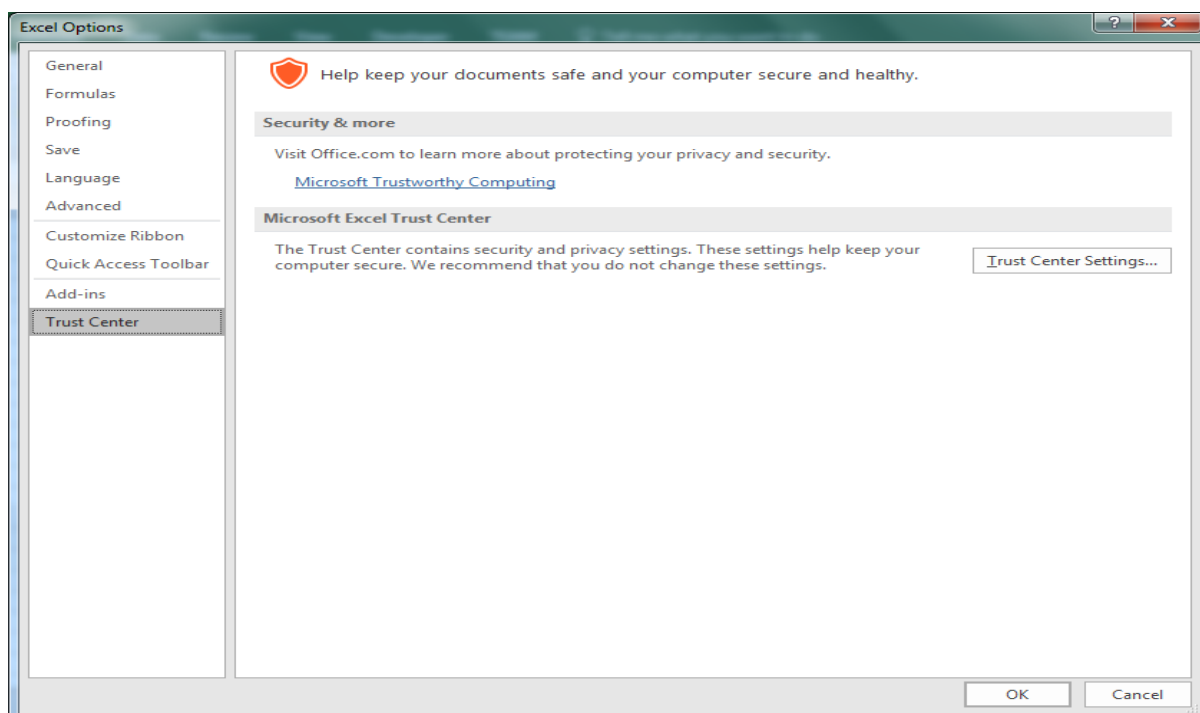
Step 1: Launch the Excel and click on the File menu of Top-Left. Following screen will appear with menus.



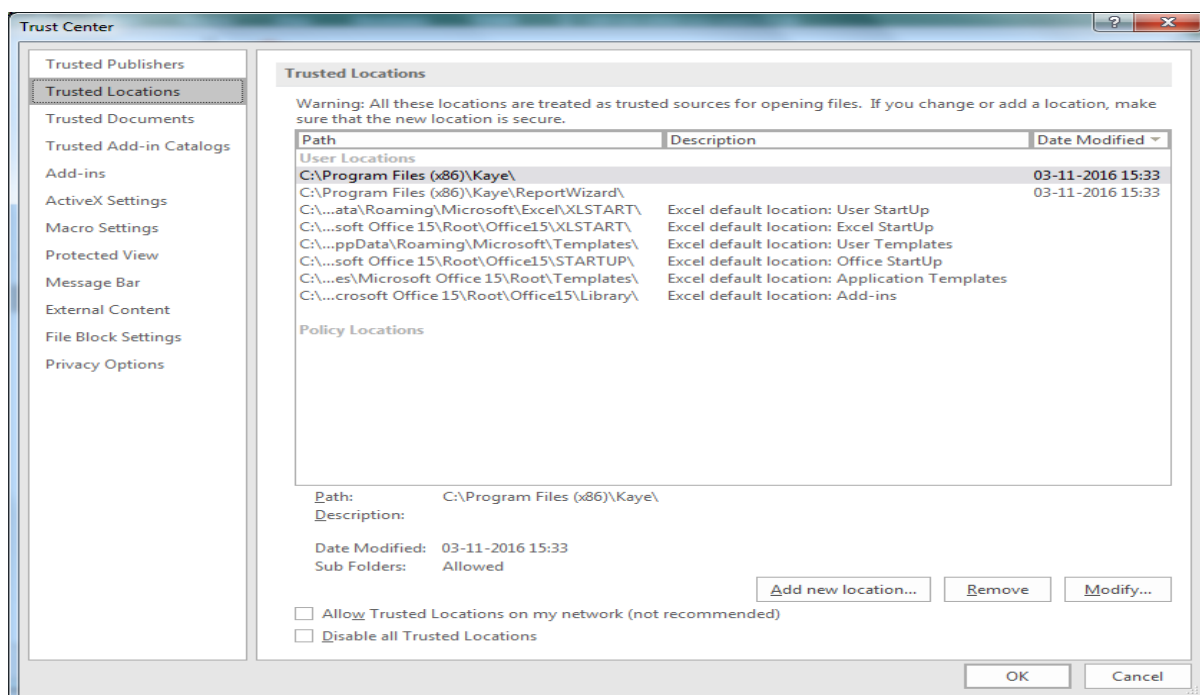
Step 2: Click on **Options** menu. Following screen will be displayed.



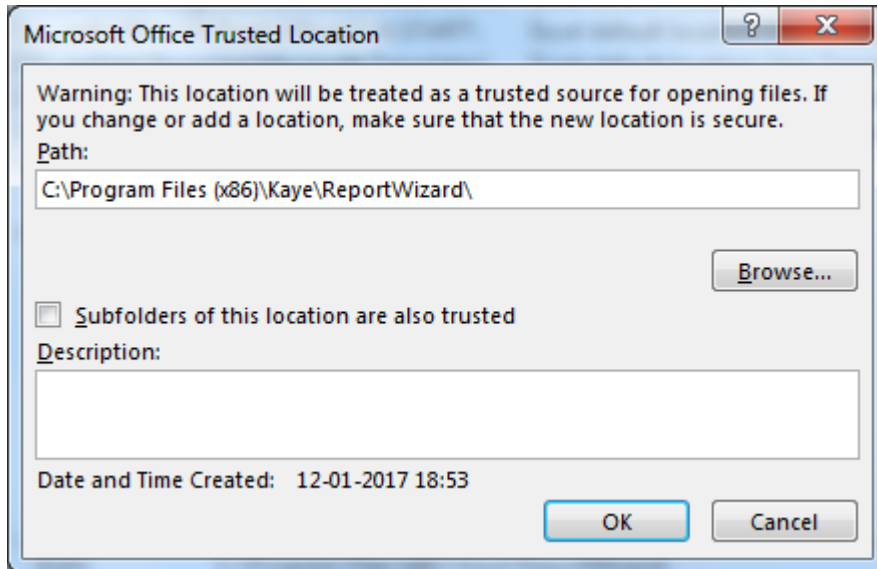
Step 3: Select the **Trust Center** in left pane and click on the **Trust Center Settings** in the Right Pane. Following Screen will be displayed.



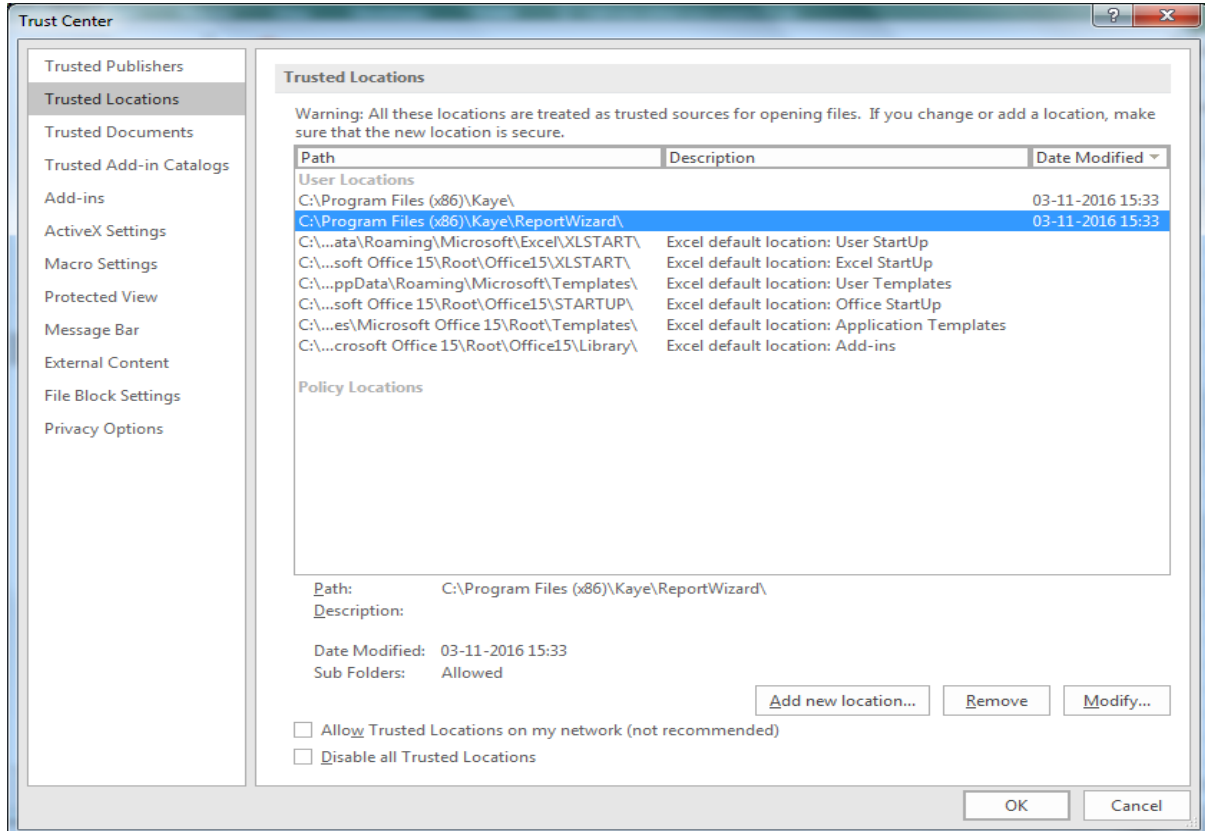
Step 4: Select the **Trusted Location** in left pane and click on the **Add new location** in the Right Pane of the above screen. Following screen will be displayed.



Step 5: Browse the folder where report Wizard is installed like in this case it is **C:\Program Files\Kaye\Report Wizard** and checked the **check box (sub folders of this location are also trusted)**.



Step 6: Click on the OK button of above screen. Following screen will be displayed. Check that above path is added in the Right pane.

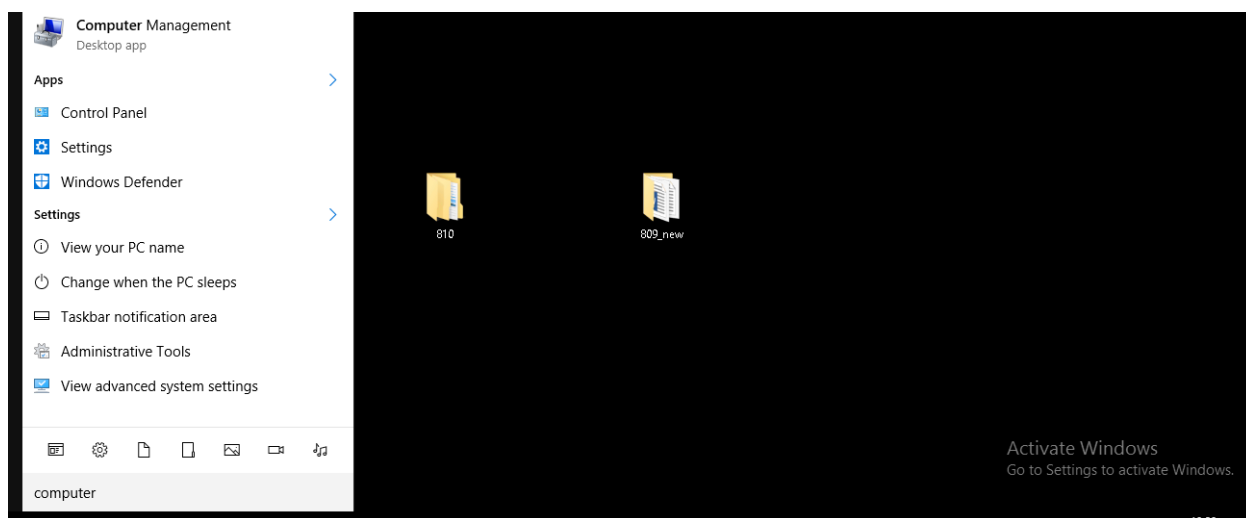


Step 7: Click on the OK button of the above screen and exit the Excel.

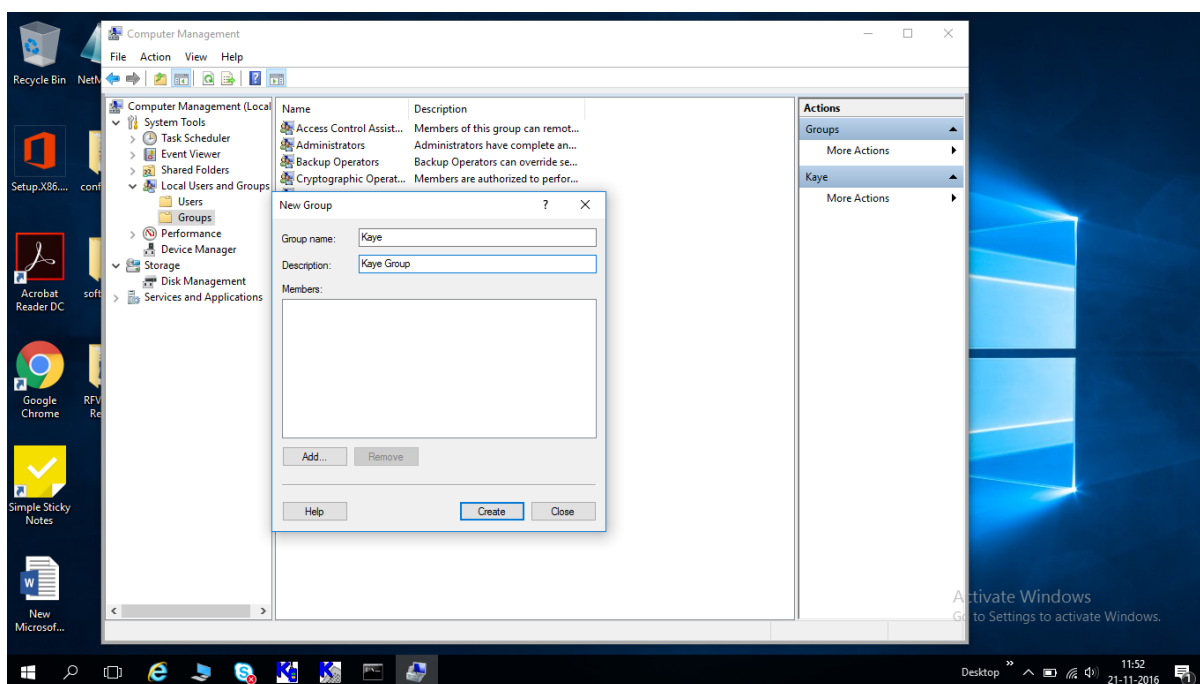
Windows 8 and Windows 10 User Configuration

Perform following steps to create “Kaye” User Group

1. Right click Computer Management, select Manage



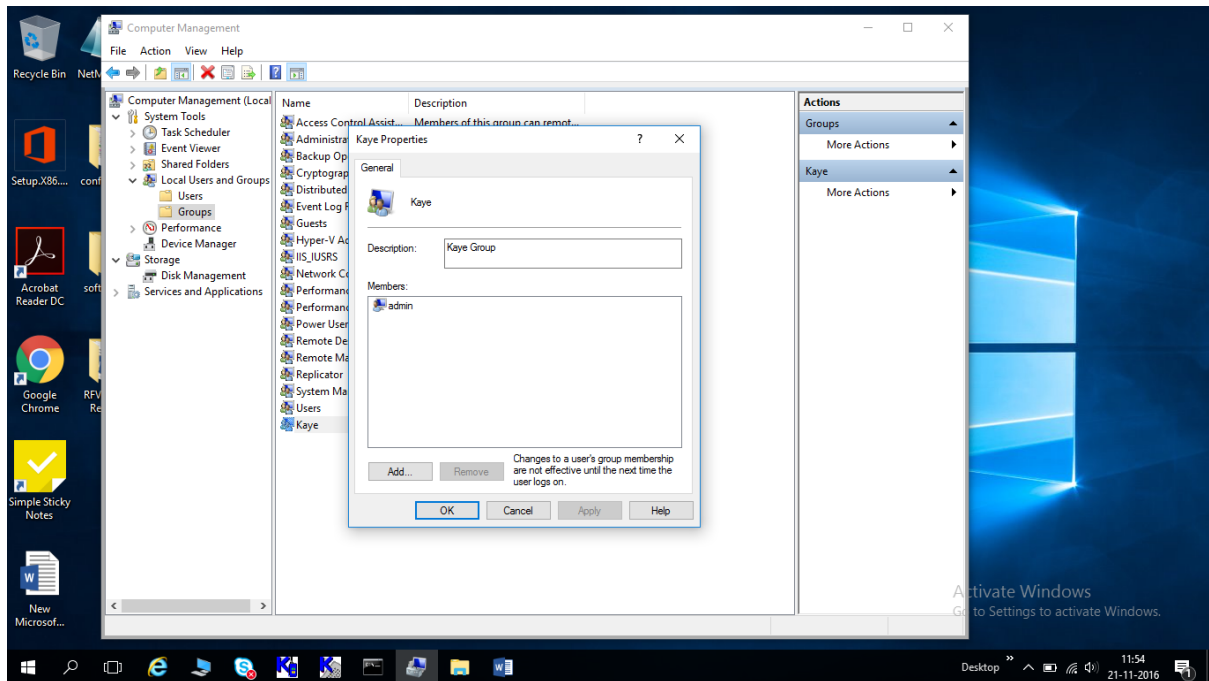
2. Select **Local Users and Groups / Groups** and right Mouse click on “**Groups**” and select **New Group**



3. Enter group name & description and click Create, in this example we created a group name “Kaye” with a description “Kaye Group”.

Adding user (standard user account) to the Kaye Group

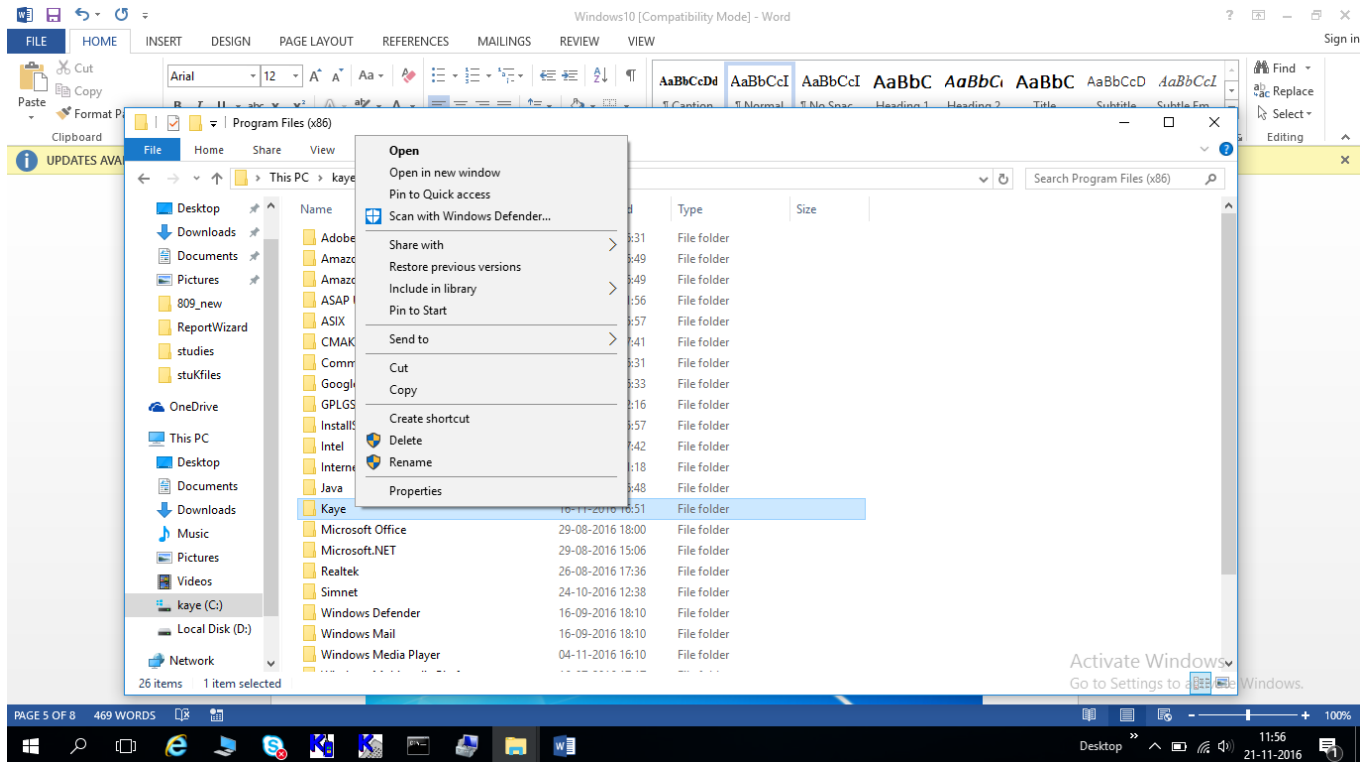
1. Right Mouse click on Kaye Group and select Properties



2. Click Add button to add user (standard user account) to the Kaye Group

Giving “Kaye” User Group permissions to the Kaye Validation products installation folder

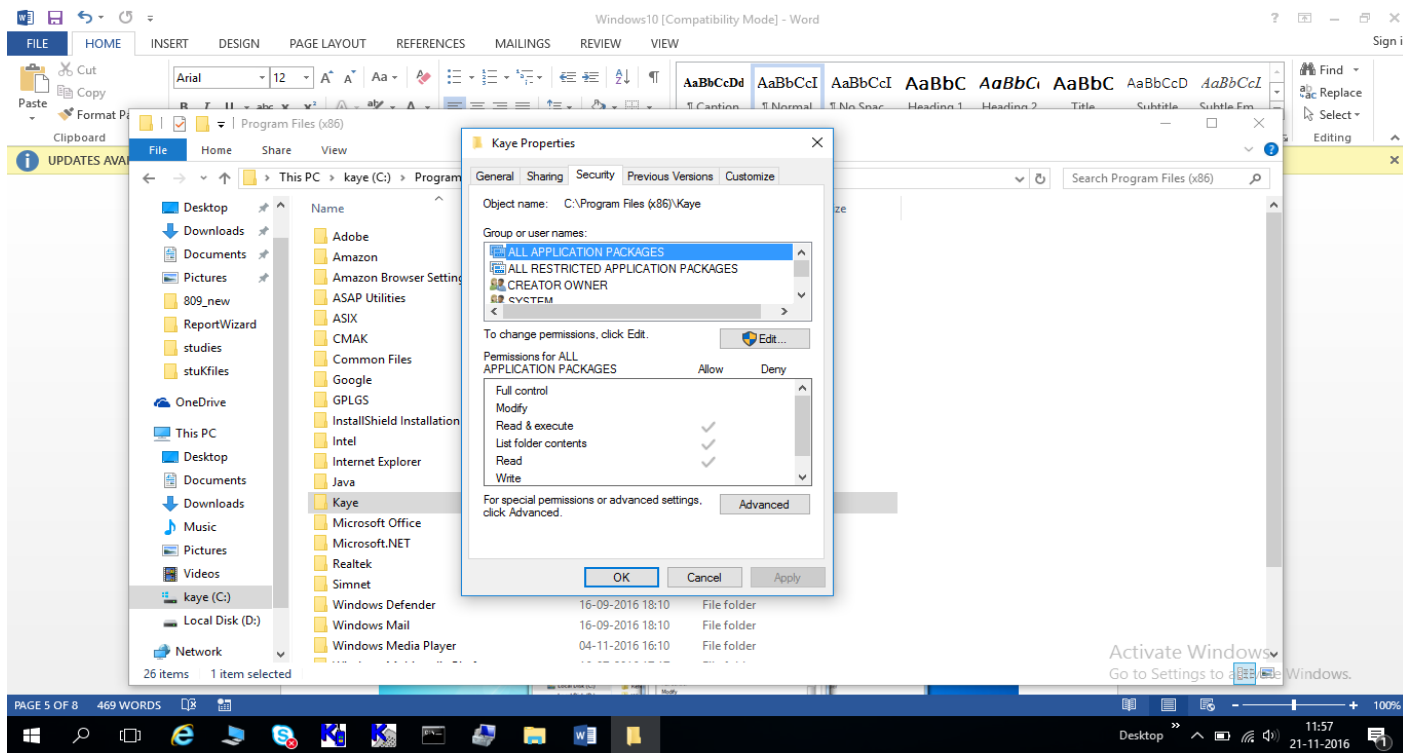
1. Go to the Kaye Validation products installation folder [Default C:\Program Files\Kaye]



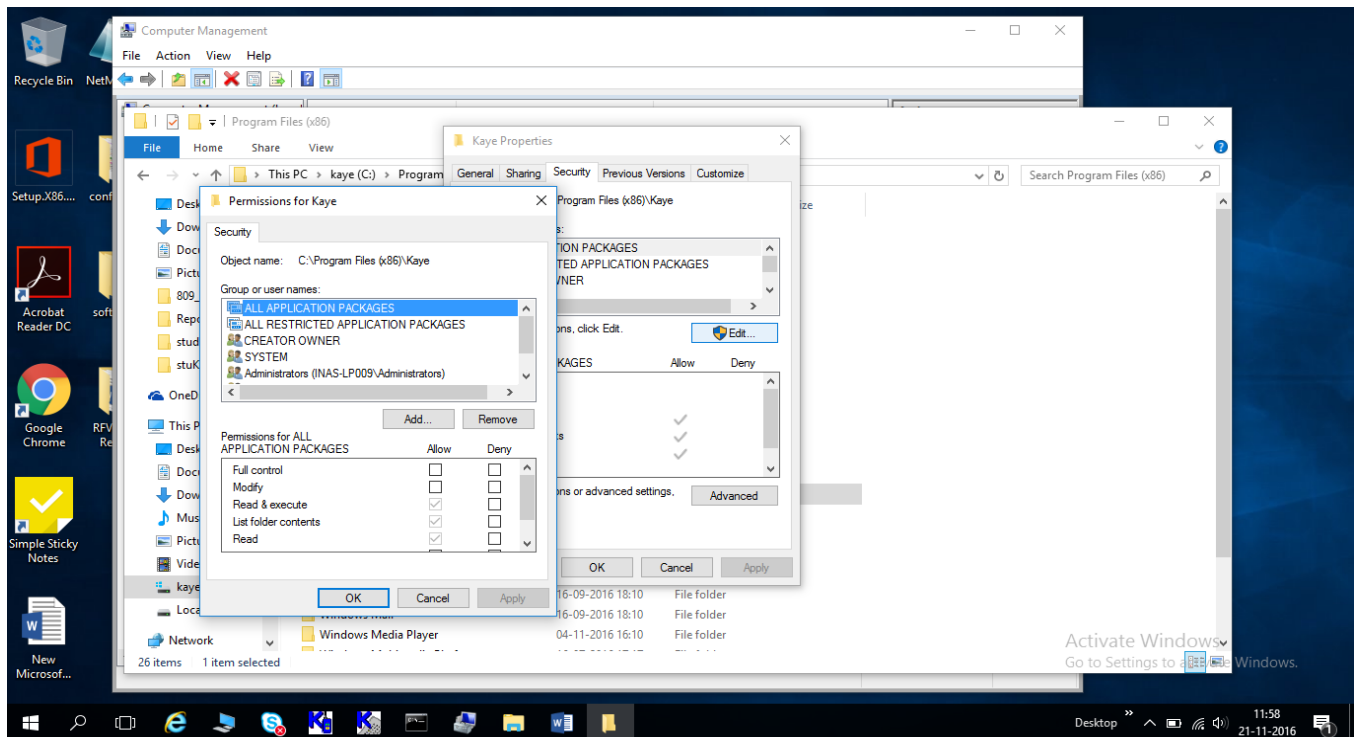
User Group Permission is given only to Kaye folder, assuming the entire ValProbe Installation is done on single folder “C:\Program Files\Kaye”. But if Report Wizard & ValProbe are installed on different locations then User Group permissions needs to be applied to those folders as well before running the application for the first time.

Below mentioned example assumes ValProbe is installed at default location “C:\Program Files\Kaye”.

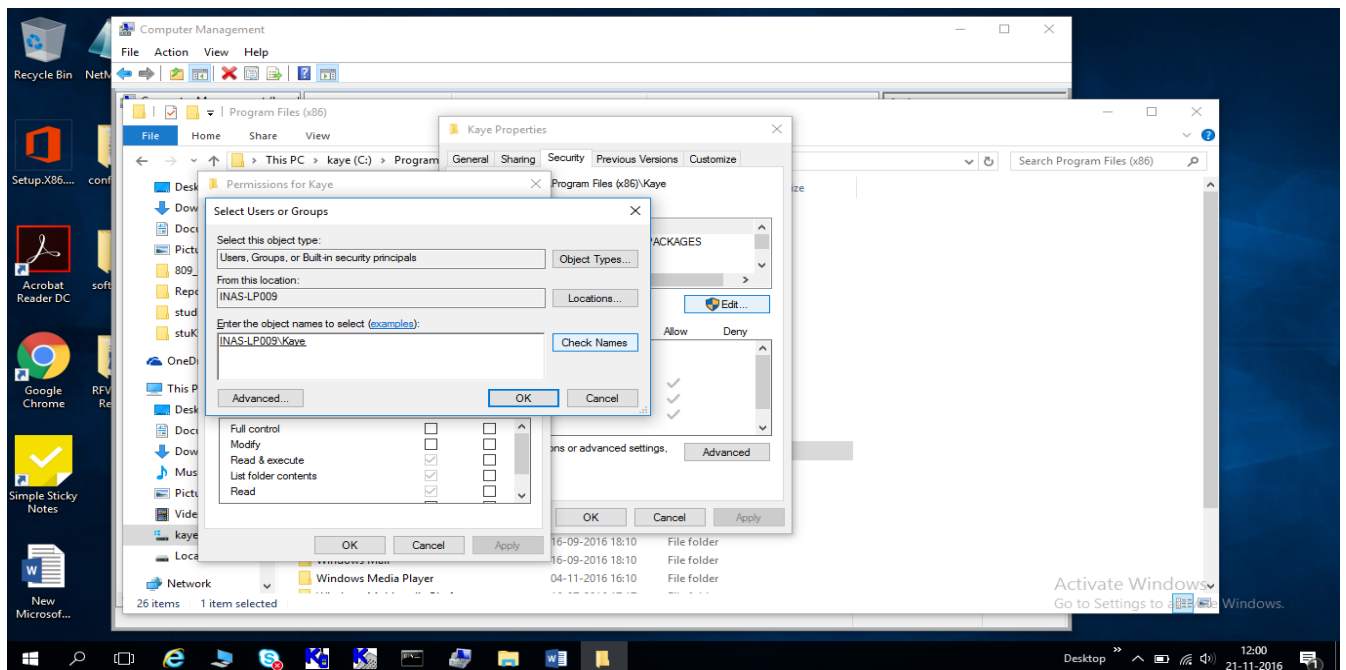
2. Right mouse click on “Kaye” folder and select **Properties** and select Security Tab as shown below.



3. Click on **Edit** button

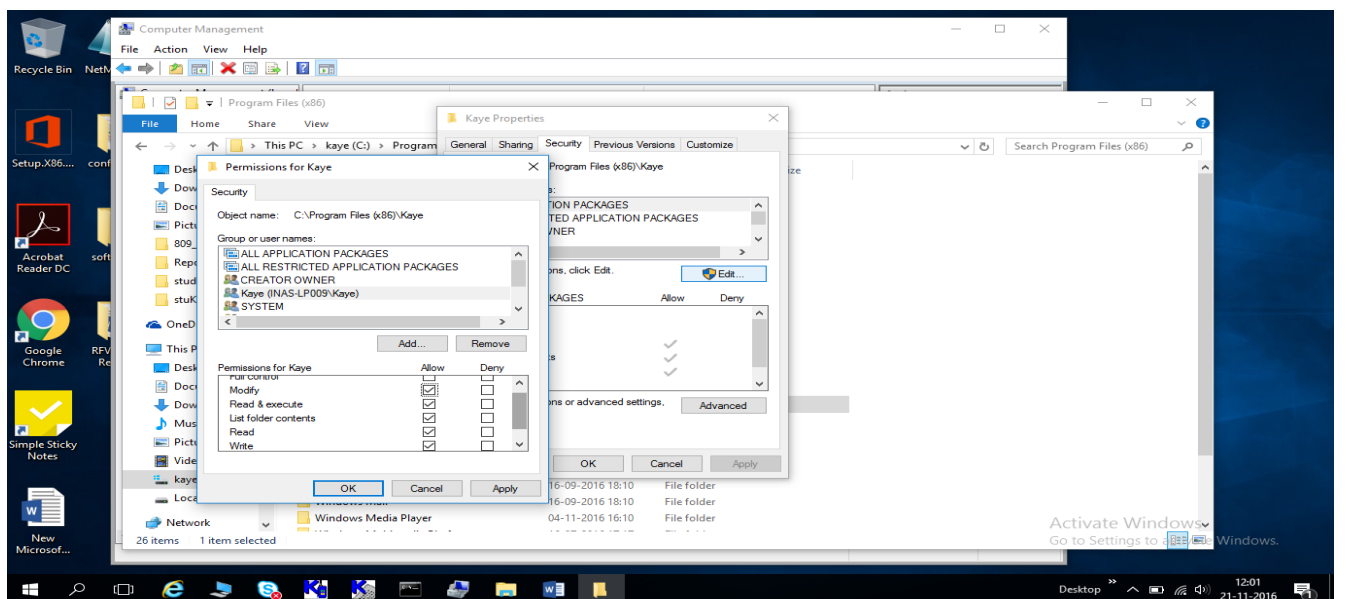


4. Click **Add** button



5. Type in Group name ("Kaye") which was defined and click on **Check Names** to verify existence of the group name and click OK to add the group.

As shown in below screenshot, select Kaye group which was added in the group list and change the permissions for the Kaye Group to allow **Modify, Read & Execute, List Folder Contents, Read, Write**



Log off from administrator login and login with standard user account which was added to Kaye group in step 4 and then run Kaye Software from Start->Programs-> Val Probe or Validator or RF ValProbe.